

SPE100/SPE400

Solid Phase Extraction

Hanon SPE100/SPE400 with mobile rack is designed specially for modern laboratory. It has large cartridge capacities with full automation and can extract, separate and purify trace organics from food, medicines, beverage, soil, water, blood. It can complete automatically Activation, sampling, elution, leaching, drying, metered volume. High production and high degree of automation; it' s integrated sealing foot design. Widely used in pesticide residue analysis, veterinary drug residues, food additives, judicial inspection, water & environment protection, pharmaceutical and biological samples. It is also an very important sample preparation system for GC, HPLC or MS.

Characteristics

- Modify your own method meet your different experiment requirement.
- Probe level track function, probe track the liquid level and low down, decrease the touching part with the sample, avoid cross contamination from other sample or solution.
- Collect multi-component with the same SPE cartridge.
- Solution monitor, software can show the volume in real time. Leakage warning.
- Waste solution collection, eco-friendly.
- Multi-way cleaning.
- Metered volume module is optional, realize metered volume accuracy.
- High volume sampling module is optional(up to 20L).
- Pressure overload protection, Syringe Pumps are equipped with pressure sensing modules that monitor pressure and can be used to handle error conditions such as high cartridge pressure or clogged liquid lines.
- High precision locating, accuracy up to $\pm 0.01\text{mm}$.

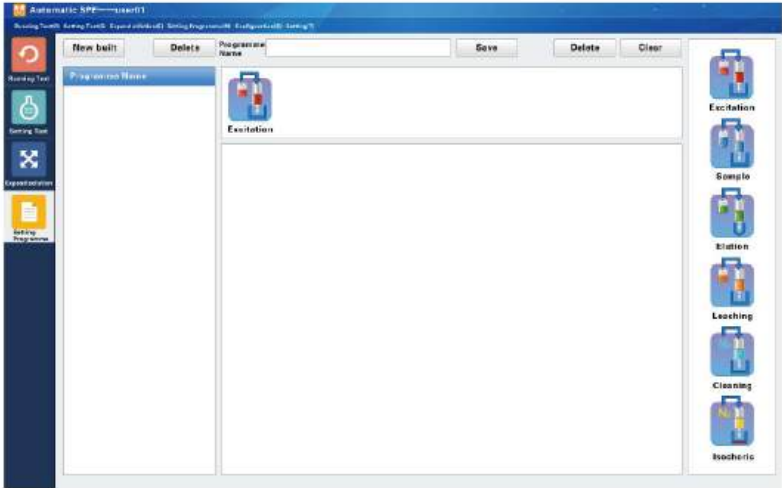


Features

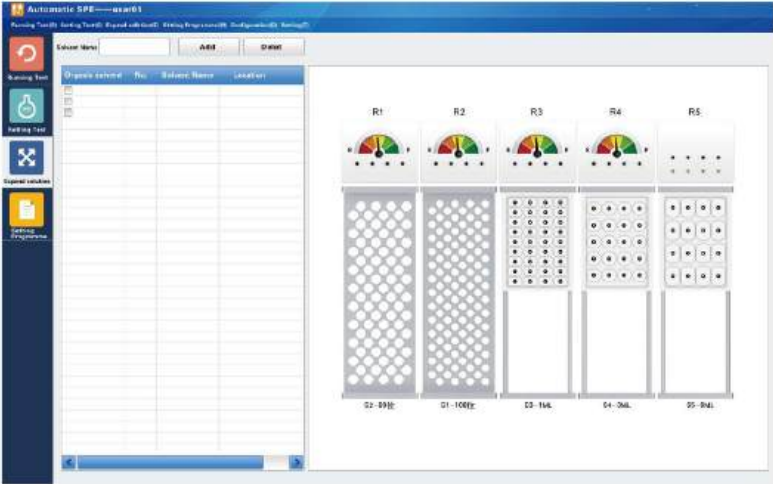
Cloud service. Software provide unique update and download method from our web-server, share your method worldwide or internal sharing.

Integrated metered volume module, metered volume sample after extraction. It effectively improve the production and short time of sample preparation.

Powerful software workstation. User-friendly graphical interface minimizes the learning curve while maximizing efficiency. The application run screen provides complete control over your run; from set up to application run, to simulation and the modification of your method. Provide powerful auto-detection function, automatically detect any wrong about the method and setting. Provide user account control. It's according with GLP/GMP.



Cartridges capacity up to 108 pcs, improve rapidly production.



Extraction kit configuration

Volume	Item	Specification	Standard Configuration	Samples/batch	Optional addition set	The Max quantity of Sample
1ml extraction kit	1ml cartridge	36 positions	1 set	36 positions	2	108
	1ml Waste collection	18 positions				
	1ml Collection module	36 positions				
3ml extraction kit	3ml cartridge	20 positions	1 set	20 positions	3	80
	3ml Waste collection	10 positions				
	3ml Collection module	20 positions				
6ml extraction kit	6ml cartridge	36 positions	1 set	16 positions	3	64
	6ml Waste collection	36 positions				
	6ml Collection module	36 positions				

SPE with Mobile Rack Configuration

	Item	Configuration
Standard	High accuracy sampling system	Presicion syringe pump, X/Y/Z axis mobile rack
	Extraction system	Multiple extraction kit, Sample rack
	Solution management system	Slution tank, extensible function
	Cleaning system	Multiple cleaning funciton
	workstation system	User friendly interface, full automatic and smart configuration
Optional	Metered volume moudle (concentration)	concentration system, metered volume system
	High volume sampling moudle	High volume sampling, up to 20L

Technical data

	SPE 100	SPE 400
Channels	1	4
Cartridge Types	1ml, 3ml , 6ml	
Cartridge capacity	108 – 1 ml cartridges 80 – 3ml cartridges 64 - 6ml cartridges	
Air Push Modes	Syringe or Gas Cylinder from Solenoid Valve	
Syringe capacity	10 ml	
Flow rate	0-50ml/min	
Solution type	4 solution cell, solution type up to 100	
Multi-component collection	YES	
Waste liquid type	Water liquid and organic solvent collection separated	
Drying (gas)	pressure≤50psi	
Extraction mode	Positive Pressure	
Continue running different method automatically	YES	
Solution volume monitor	5 class display	
Method saving	Local drive or cloud sever	
Metered volume module	optional	
Dimension (h×w×d)	705×805×585 mm	
Power supply	100- 240V 50/60Hz±10%	
Power	120W	160W