



# TK SERIES

Test Cabinets





*TK Series Test Cabinets are developed for simulating real environmental conditions by controlling temperature, humidity and day-night lighting cycles.*

## DESIGNED FOR DIFFERENT APPLICATIONS

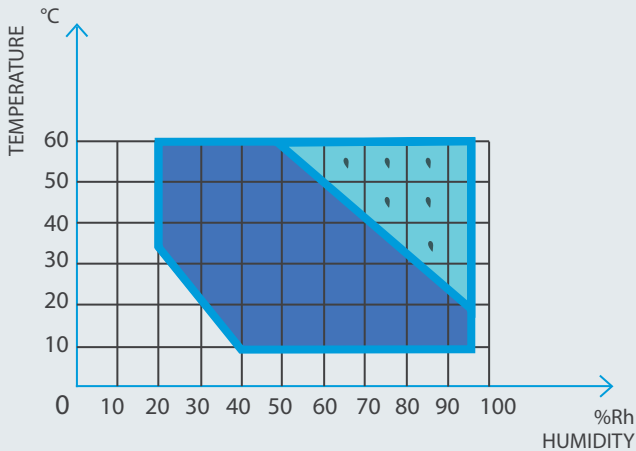
By means of the wide range of temperature and humidity control, various kind of products can be tested at different climatic conditions. Stability, artificial aging and storage tests can be easily done as well. The excellent design of TK series Test Cabinets allows them to be used for different purposes in different sectors such as:

- Electronic industry
- Automobile industry
- Telecommunication industry
- Automobile supply industry
- Chemical industry
- Plastic industry
- Textile industry
- Pharmaceutical industry
- Food industry
- Packaging industry
- Plant growth
- Genetic manipulations of plants
- Seed germination
- Cultivation of protoplasm and cells
- Acclimation of plants
- Culture of plant cells and tissues
- Incubation and rearing of insects

## DURABLE AND RELIABLE DESIGN

- Stainless steel chamber resisting sudden temperature changes
- Outer body including the door made of epoxy-polyester coated stainless steel to resist high humidity levels
- Insulation consisting of high density injected polyurethane
- Internal glass door for controlling the samples inside without disturbing the climatic condition in the chamber
- Ø25 mm. access port as standard





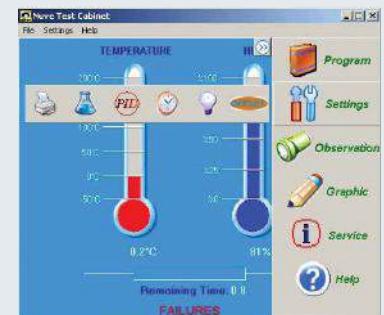
## CLIMATIC CONTROL SIMILAR TO NATURE

- Lighting by means of the lights located inside the door
- Programmable timer lighting
- Humidity generator to obtain high level of RH
- Sensitive humidity measurement by humidity sensor
- PID controlled heating and proportional controlled cooling and humidification
- Powerful air circulation system maintaining temperature and humidity uniformity and stability even at low temperatures

## SENSITIVE CONTROL SYSTEM

- Full information with 128x64 pixel LCD display
- Ten program memories for frequently operated applications
- Programmable parameters :
  - Temperature: -10°C / +60°C
  - Humidity: 20% - 95% RH
  - Time: 0-999 hours 59 minutes and hold position
  - No. of steps: 1-9
  - No of program repetition: 1-99
- Comprehensive self-diagnostic system to provide information regarding any malfunction for:
 

|                          |                              |
|--------------------------|------------------------------|
| - Overheating            | - Temperature sensor failure |
| - Cooling system failure | - Humidity sensor failure    |
| - Communication failure  | - Low water level            |
| - Power failure          | - Full reserve tank          |
- 32 KB memory which can be upgraded to 256 KB as option
- Optional NuveClimate™ software for programming and controlling the operation via computer
- Printer connection for printing operated programs in the memory and the current operating program
- RS 232 port for PC connection
- For ultimate security optional AlerText™ sends a text message to mobile phones



## TECHNICAL SPECIFICATIONS

|   | TK 120                                       | TK 252       | TK 600       |
|---|--|--------------|--------------|
| Chamber Volume, litres                  | 120  | 252          | 632          |
| Control System                          | Programmable Microprocessor Control System   |              |              |
| Display                                 | 128x64 pixel LCD display                     |              |              |
| Temperature Range without Humidity      | - 10°C / +60°C (Lights off)                  |              |              |
|   | 0°C / +60°C (Lights on)                      |              |              |
| Temperature Range with Humidity         | + 10°C / + 60°C                              |              |              |
| Humidity Range                          | 20% / 95% RH                                 |              |              |
| Temperature Set and Reading Sensitivity | 0,1°C  |              |              |
| Humidity Set and Reading Sensitivity    | 1% RH  |              |              |
| Maximum Light Level, lux                | 6.000  | 12.000       | 12.000       |
| Timer                                   | 1-999 Hours and 59 Minutes and Hold Position |              |              |
| Lighting Timer                          | 0-24 Hours                                   |              |              |
| No of Program Memory                    | 10   |              |              |
| No of Steps                             | 9  |              |              |
| No of Program Repetition                | 1-99   |              |              |
| Memory Capacity                         | 32 Kb  |              |              |
| No of Shelves Standard/max.             | 2 /16  | 3/21         | 3/27         |
| Internal Material                       | Stainless Steel                              |              |              |
| External Material                       | Epoxy-Polyester Coated Stainless Steel       |              |              |
| Power Consumption                       | 1.400 W                                      | 2.000 W      | 3.000 W      |
| Power Supply                            | 230 V, 50/60 Hz.                             |              |              |
| Internal Dimensions (WxDxH) mm.         | 480x545x480                                  | 480x545x990  | 740x650x1350 |
| External Dimensions (WxDxH) mm.         | 680x820x1150                                 | 680x820x1850 | 985x935x1990 |
| Net/Packed Weight, kg.                  | 125/148                                      | 175/197      | 290/329      |

### FACTORY FITTED OPTIONS

|           |  |
|-----------|--|
| TK XXX W  | NuveGrowth™ data control software and RS 232 interface |
| TK XXX A  | Automatic water supply unit                            |
| TK XXX R  | Remote alarm outlet                                    |
| TK XXX R2 | NuveWarn™ remote alarm system with 10 m. cable         |

### OPTIONS

|          |  |
|----------|--|
| A 08 142 | AlerText™ GSM alarm module (Should be ordered with TK XXX R) |
| E 05 073 | 256 KB memory  |

### ACCESSORIES

|          |                              |
|----------|------------------------------|
| R 01 139 | Shelf for TK 120/252         |
| K 23 040 | Shelf carrier for TK 120/252 |
| R 01 146 | Shelf for TK 600             |
| K 23 062 | Shelf carrier for TK 600     |



NUVE SANAYİ MALZEMELERİ İMALAT VE TİCARET A.Ş.

Saracalar Mah. Saracalar Kümeevleri No: 4/2 Akyurt 06750 ANKARA t. 0312 399 28 30 f. 0312 399 21 97

[nuve.com.tr](http://nuve.com.tr) [sales@nuve.com.tr](mailto:sales@nuve.com.tr)

ISO 9001: 2008  
ISO 13485: 2003

