

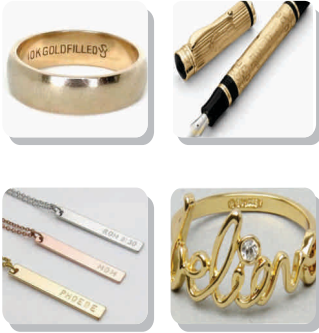
Diode Laser Marking Machine

CLEP 10

**Optional
Auto HUD Available**

Smooth Marking Quality

Laser Stamping Samples



Optional Rotary



Technology

Based on Diode End Pump Laser Which highly reliable laser source.

Marking

Able to mark all metal and some non-metal materials.

Convenience

Integrated Air Cooled Technology makes this machine work on a low power consumption of below 800W* thus makes it most energy savings.

Dependability

Sturdy frame structure for lowest vibration and trouble free operation.

Compact

Table Top system with compact Fiber Laser Module with Ultra fast Scanning System,

Ease

Support for auto-coding, serial number, batch number, date bar code and two dimensional codes.

Compatibility

Original Software suitable for windows, Training for routine Operations

Low Maintenance

Complete enclosed laser module design with the optical fiber transmission pump light source & air cooling systems, which offers better protection for the laser devices hence reducing the failure rate.

Model	CLEP 10
Laser Source	Diode End Pump
Laser Power	10W
Pick Power	50 kW
Wavelength	1064 ±1 nm
Beam Quality M ²	< 1.2
Pulse Repetition Rate	25 KHz
Marking Area (mm)	100 x 100
Working Life of Laser	Greater than 20,000 hours
Marking Speed	< 7000 mm/sec
Laser Frequency	20 - 100 kHz
Cooling System	Air Cooling
Axis	Auto Z Axis
Minimum Width	0.03 mm
Minimum Character	0.3 mm
Repeatability	0.003 mm
Power Consumption	800 W
Power Supply	12V / 25A DC V AC, 60 Hz / 1P / 4A or 110V / 50Hz / 1P / 8A
Dimension (LxWxH)	680 x 460 x 640
Net Weight (Approx)	45 kg
Packing Dimension (LxWxH)	625 x 400 x 632