

# NE4-P Digital Circulating Baths Stirred Baths

*Clifton Range*<sup>®</sup>



NE4-8P



Clifton digital circulating baths are designed for circulation of temperature controlled water in a closed circuit or for maintaining a stable temperature environment in the bath for the immersion of flasks, bottles and racks.

Clifton circulating baths are constructed using durable stainless steel, painted surfaces are powder coated with tough anti-bacterial finish with good chemical resistance. Easy to use controls that wipe clean also have an anti-bacterial finish. Immersed components are corrosion resistant. Quiet running in use and providing excellent water temperature stability. Indication of heating, over temperature alarm and timer running.

This range features the ability to pump temperature controlled liquid around a closed circuit. Featuring a circulation pump with the capacity of 10 litres per minute.

## NE4 - 8P

## NE4 - 14P

GENERAL	
Temp. Range	Ambient + 5°C - 99°C (-20°C with accessory cooling)
Temp. Alarm	Under/over temperature alarm is automatically set 4°C above and 4°C below set point
Temp. Control	PID Digital, LED display, resolution 0.1°C
Sensitivity/Uniformity	±0.05°C / ±0.01°C
Timer	Visual indicator and audible end message - Variable 00:01 to 99:59 hh:mm
Pump Capacity & Pressure	10 litres/min - 150 mbar
Pump Connection Ports	Inlet & outlet ports take 4mm bore x 6mm o/d tubing
Heater Power (220-240V)	1250W
Voltage	120V or 230V models available 50-60Hz
DIMENSIONS	
Tank Capacity	8 Litre
External (mm)	271w x 332d x 170h
Internal (mm)	129w x 300d x 150h
Water Level Max. (mm)	130

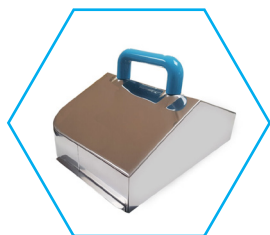
# NE4-P Digital Circulating Baths

## Stirred Baths

	NE4-22P	NE4-28P	NE4-56P
<b>GENERAL</b>			
Temp. Range	Ambient + 5°C - 99°C (-20°C with accessory cooling)		
Temp. Alarm	Under/over temperature alarm is automatically set 4°C above and 4°C below set point		
Temp. Control	PID Digital, LED display, resolution 0.1°C		
Sensitivity/Uniformity	±0.05°C / ±0.01°C		±0.2°C / ±0.02°C
Timer	Visual indicator and end message - Variable 00:01 to 99:59 hh:mm		
Pump Capacity & Pressure	10 litres/min - 150mbar		
Pump Connection Ports	Inlet & outlet ports take 4mm bore x 6mm o/d tubing		
Drain	N/A	Drain Outlet	
Heater Power (220-240V)	1250W		2000W
Voltage	120V or 230V models available 50-60Hz		230V / 50-60Hz
<b>DIMENSIONS</b>			
Tank Capacity	22 Litre	28 Litre	56 Litre
External (mm)	537w x 332d x 170h	537w x 332d x 290h	660w x 540d x 290h
Internal (mm)	395w x 298d x 150h	395w x 298d x 200h	490w x 500d x 200h
Water Level Max. (mm)	130	180	

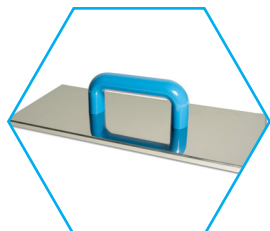
# NE4-P Digital Circulating Baths

## Accessories



### Stainless Steel Gable Lid

Bath	NE4-8P	NE4-14P	NE4-22P	NE4-28P	NE4-56P
Accessory Code	SL4-8	SL4-14	SL4-22		SL4-56



### Stainless Steel Flat Lid

Bath	NE4-8P	NE4-14P	NE4-22P	NE4-28P	NE4-56P
Accessory Code	LD4-8	LD4-14	LD4-22		N/A



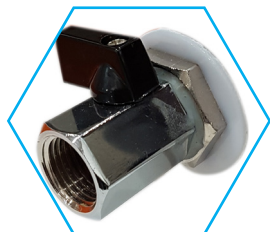
### Polypropylene Spheres (Pack of 200)

Bath	NE4-8P	NE4-14P	NE4-22P	NE4-28P	NE4-56P
No. of Packs	1 Pack	2 Packs	3 Packs		8 Packs
Accessory Code	BP0368				



### Immersion Dip Cooler [ambient to -20°C]

Bath	NE4-8P	NE4-14P	NE4-22P	NE4-28P	NE4-56P
Accessory Code	DC1-300				



### Drain Tap

Bath	NE4-8P	NE4-14P	NE4-22P	NE4-28P	NE4-56P
Accessory Code	N/A			BX0953	

## NE4-P Digital Circulating Baths Accessories



### Push fit and lock insulated hose 1 m length x 6mm dia.

Bath	NE4-8P	NE4-14P	NE4-22P	NE4-28P	NE4-56P
Accessory Code	HS-1				



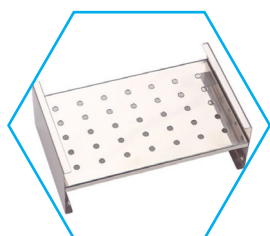
### Push fit and lock insulated hose 2m length x 6mm dia.

Bath	NE4-8P	NE4-14P	NE4-22P	NE4-28P	NE4-56P
Accessory Code	HS-2				



### Stainless Steel Test Tube Racks

Bath	NE4-8P	NE4-14P	NE4-22P	NE4-28P	NE4-56P
No. of Racks	1	3	5		10
Accessory Code	6870 : 26 holes x 17mm DIA				
	6871 : 16 holes x 26mm DIA				
	6872 : 36 holes x 13mm DIA				
	6873 : 18 holes x 19mm DIA				
	6900 : 12 holes x 32mm DIA				



Bath	NE4-8P	NE4-14P	NE4-22P	NE4-28P	NE4-56P
Accessory Code	N/A	RS4-14	RS4-14 RS4-22		N/A

## Universal Accessories

CAL	Calibration Record
BX0616	Draining Syphon