

# NE4-D Classic Digital Stirred Baths

# Clifton Range®



NE4-22D

Clifton stirred water baths feature a digital PID temperature controller and are designed for immersion of flasks, bottles and racks in an accurate temperature environment throughout the water bath.

Constructed using durable stainless steel, painted surfaces are powder coated with anti-bacterial finish with good chemical resistance. Easy to use controls that wipe clean also have an anti-bacterial finish.

The stainless steel tank is housed in a sturdy outer case and is supplied complete with a stainless steel shelf which provides even water circulation and temperature stability.

## NE4 - 8D

## NE4 - 14D

## NE4 - 22D

GENERAL			
Temp. Range	Ambient + 5°C - 99°C (-20°C with accessory cooling)		
Temp. Alarm	Under/over temperature alarm is automatically set 4°C above and 4°C below set point		
Temp. Control	PID Digital, LED display, resolution 0.1°C		
Sensitivity/Uniformity	±0.05°C / ±0.01°C		
Timer	Visual indicator and audible end message - Variable 00:01 to 99:59 hh:mm		
Heater Power (220-240V)	1250W		
Voltage	120V or 230V models available 50-60Hz		
DIMENSIONS			
Tank Capacity	8 Litre	14 Litre	22 Litre
External (mm)	271w x 332d x 170h	361w x 332d x 170h	537w x 332d x 170h
Internal (mm)	129w x 300d x 150h	219w x 298d x 150h	395w x 298d x 150h
Water Level Max. (mm)	130		

## NE4 - 28D

## NE4 - 38D

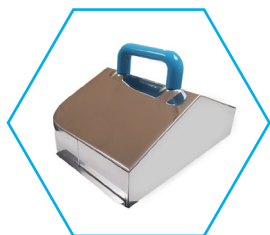
## NE4 - 56D

GENERAL			
Temp. Range	Ambient + 5°C - 99°C*	Ambient + 5°C - 99°C (-10°C with accessory cooling)	
Temp. Alarm	Under/over temperature alarm is automatically set 4°C above and 4°C below set point		
Temp. Control	PID Digital, LED display, resolution 0.1°C		
Sensitivity/Uniformity	±0.05°C / ±0.01°C		±0.2°C / ±0.02°C
Timer	Visual indicator and v end message - Variable 00:01 to 99:59 hh:mm		
Heater Power (220-240V)	1250W		2000W
Voltage	120V or 230V models available 50-60Hz		230V / 50-60Hz
Drain	Drain Outlet		
DIMENSIONS			
Tank Capacity	28 Litre	38 Litre	56 Litre
External (mm)	537w x 332d x 290h	715w x 330d x 235h	660w x 540d x 290h
Internal (mm)	395w x 298d x 200h	570w x 295d x 200h	490w x 500d x 200h
Water Level Max. (mm)	180	190	180

\*-20°C with accessory cooling

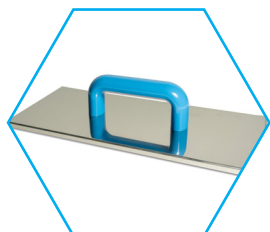
# NE4-D Classic Digital Stirred Baths

## Accessories



### Stainless Steel Gable Lid

Bath	NE4-8D	NE4-14D	NE4-22D	NE4-28D	NE4-38D	NE4-56D
Accessory Code	SL4-8	SL4-14	SL4-22		SL4-38	SL4-56



### Stainless Steel Flat Lid

Bath	NE4-8D	NE4-14D	NE4-22D	NE4-28D	NE4-38D	NE4-56D
Accessory Code	LD4-8	LD4-14	LD4-22		LD4-38	N/A



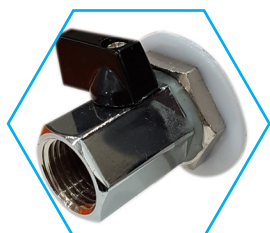
### Polypropylene Spheres (Pack of 200)

Bath	NE4-8D	NE4-14D	NE4-22D	NE4-28D	NE4-38D	NE4-56D
No. of Packs	1 Pack	2 Packs	3 Packs		5 Packs	8 Packs
Accessory Code	BP0368					



### Immersion Dip Cooler [ambient to -20°C]

Bath	NE4-8D	NE4-14D	NE4-22D	NE4-28D	NE4-38D	NE4-56D
Accessory Code	DC1-300					



### Drain Tap

Bath	NE4-8D	NE4-14D	NE4-22D	NE4-28D	NE4-38D	NE4-56D
Accessory Code	N/A			BX0953		

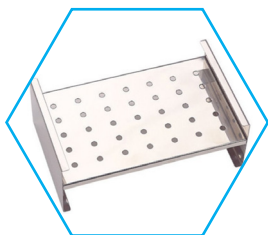
# NE4-D Classic Digital Stirred Baths

## Accessories



### Stainless Steel Test Tube Racks

Bath	NE4-8D	NE4-14D	NE4-22D	NE4-28D	NE4-38D	NE4-56D
No. of Racks	1	3	5		7	10
Accessory Code	6870 : 26 holes x 17mm DIA					
	6871 : 16 holes x 26mm DIA					
	6872 : 36 holes x 13mm DIA					
	6873 : 18 holes x 19mm DIA					
	6900 : 12 holes x 32mm DIA					



### Stainless Steel Raised Shelves

Bath	NE4-8D	NE4-14D	NE4-22D	NE4-28D	NE4-38D	NE4-56D
Accessory Code	N/A	RS4-14	RS4-14 RS4-22		RS4-14 RS4-22 RS4-38	N/A

## Universal Accessories

CAL	Calibration Record
BX0616	Draining Syphon