

## Clifton Digital Hotplates HP1D Series

# Clifton Range®



Digital hotplates feature a precision PID controller which allows temperature setting to 1°C resolution. Temperature and time settings are retained in memory, even after power off. Heater and hot warning indicator.

Featuring a hob surface, which overlaps the body to ensure that no spillages enter the controls. The hob is solid aluminium, 12mm thick for excellent thermal properties and uniform heat distribution over its working area.

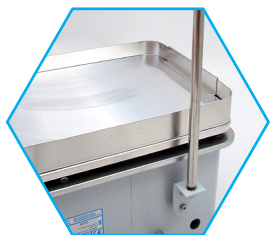
Painted surfaces and controls feature anti-bacterial protection and also chemically resistant, easy to wipe clean surfaces. The controls feature a bright LED display indicating measured temperature. Temperature settings can be easily adjusted using the push buttons.

	HP1-1D	HP1-2D	HP1-2D/120*	HP1-3D
<b>GENERAL</b>				
Temp. Range	Ambient + 10°C - 350°C			
Temp. Display	PID Digital, LED display, resolution 1°C			
Temp. Alarm	Over temperature alarm is automatically set 10°C above set point.			
Sensitivity/Uniformity	±0.5°C @ 60°C			
Timer	Variable, 00:01 to 99:59[hh:mm]			
Hob max. load guidance	8kg @ maximum 300°C (Mass evenly spread across Hob)			
Retort Points	Single M10 fixing point	Double M10 fixing point, rear hotplate		
Heater Power (220-240V)	1000W	2000W	1600W	2400W
Voltage	230V		120V	230V
<b>DIMENSIONS</b>				
External (mm)	325w x 260d x 200h	477w x 325d x 200h		706w x 325d x 200h
Hob Dimensions	305w x 240d	457w x 305d		686w x 305d

\*HP1-2D/120 -120 Volt version

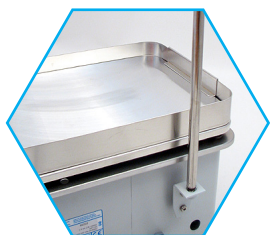
# Clifton Digital Hotplates

## Accessories



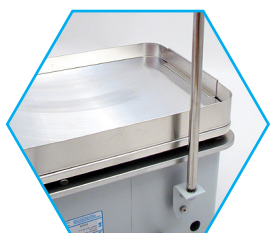
### Aluminium Retort Rod

Product Code	HP1-1D	HP1-2D	HP1-2D/120	HP1-3D
Accessory Code	8611 : 12.5mm x 600mm Aluminium Retord Rod 8614 : 10mm x 500mm Aluminium Retord Rod			



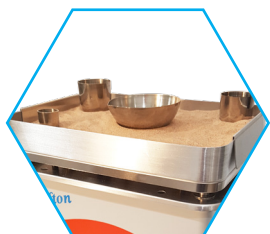
### Stainless Steel Retort Rod

Product Code	HP1-1D	HP1-2D	HP1-2D/120	HP1-3D
Accessory Code	8624 : 10mm x 500mm Stainless Steel Retord Rod			



### Mild Steel Retort Rod

Product Code	HP1-1D	HP1-2D	HP1-2D/120	HP1-3D
Accessory Code	8631 : 12.5mm x 600mm Mild Steel Retord Rod 8632 : 12.5mm x 750mm Mild Steel Retord Rod 8633 : 12.5mm x 1000mm Mild Steel Retord Rod 8634 : 10mm x 500mm Mild Steel Retord Rod			



### Sand bath kit

Product Code	HP1-1D	HP1-2D	HP1-3D
Accessory Code	SB1-1	SB1-2	SB1-3