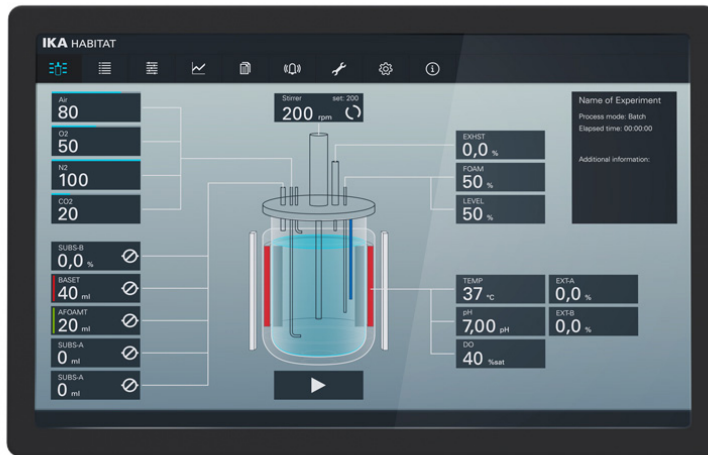




designed for scientists



## Tablet 10.x inch

/// Hoja de Datos

The 10.4 inch tablet is used to control the bioreactor and is securely attached to the control unit via a plug connection. However, the bioprocess can also be monitored and controlled from anywhere in the laboratory via a WiFi connection. The latest version of the operating software will be downloaded by the user after receipt of the tablet.



designed for scientists

